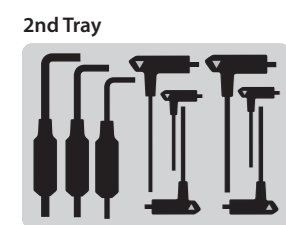
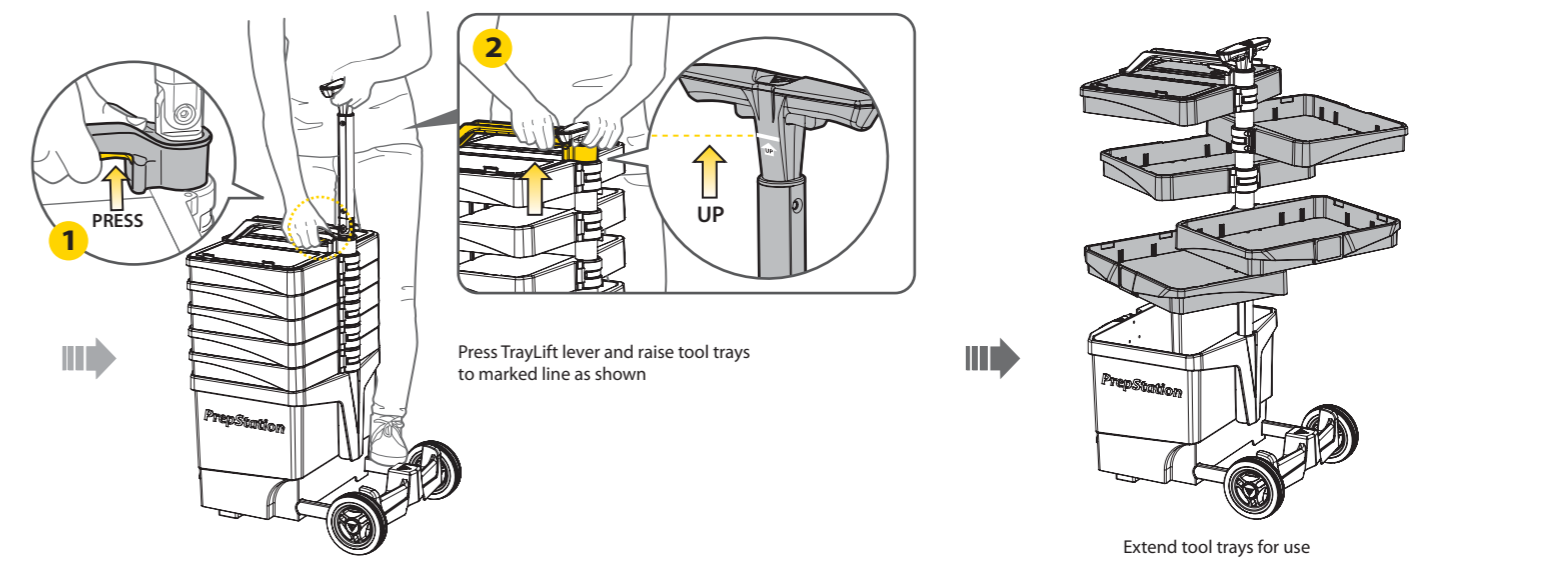
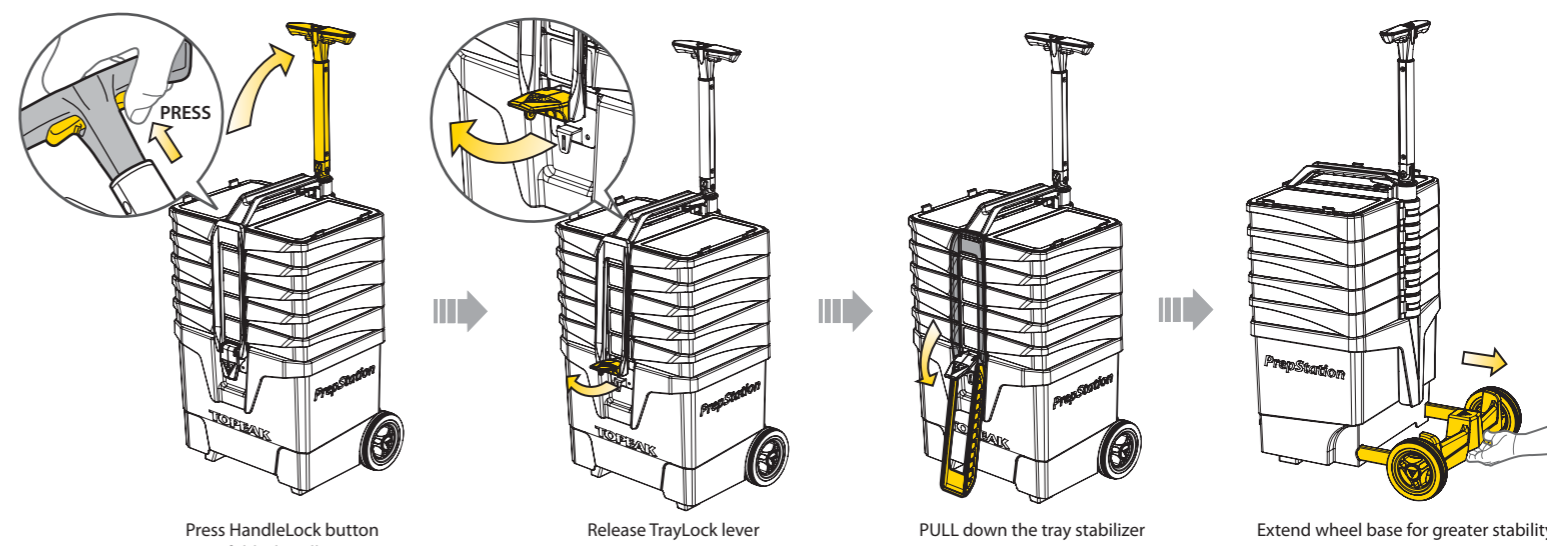
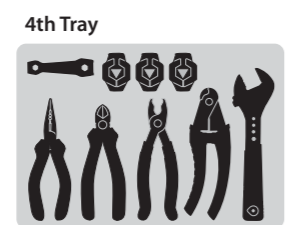


OPERATION OF PREPSTATION



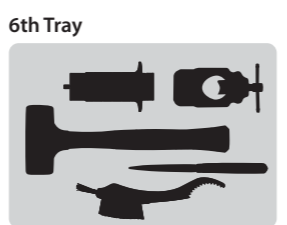
2nd Tray (9 sets)

Tools	specifications	Art no.
DuoHex Tool	6 mm	TPS-SP02
DuoHex Tool	8 mm	TPS-SP03
DuoHex Tool	10 mm	TPS-SP04
T-Handle DuoHex Wrench Set	2/2.5/3/4/5/6 mm	TPS-SP01



4th Tray (9 sets)

Tools	specifications	Art no.
Adjustable Spanner	adjust 0-29mm	TPS-SP28
Cable & Housing Cutter		TPS-SP16
Chaining Nut Wrench		TPS-SP11
DuoSpoke Wrench	13G/4.3mm	TPS-SP13
DuoSpoke Wrench	14G/15G	TPS-SP14
DuoSpoke Wrench	M7/M9	TPS-SP15
Needle Nose Pliers		TPS-SP29
PowerLink Pliers	For easy release of master links	TPS-SP12
Side Cutting Pliers		TPS-SP30



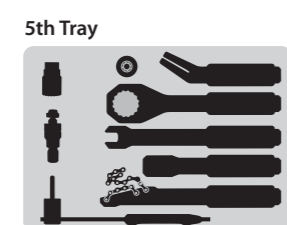
6th Tray (5 sets)

Tools	specifications	Art no.
Half Round Rasp		TPS-SP31
Rubber Mallet		TPS-SP32
Sprocket Clean Brush		TPS-SP33
Threadless Nut Setter	for installing star-flanged nut with 1-1/8" threadless head set system	TPS-SP25
Threadless Saw Guide		TPS-SP26



3rd Tray (9 sets)

Tools	specifications	Art no.
8/10 mm Double Open End Spanner	8/10 mm	TPS-SP27
All Speeds Chain Tool	For multi speed chain up to 11 speed hollow pin chains	TPS-SP08
Chain Hook & Wear Indicator		TPS-SP09
ComboTorq Wrench & Bit Set	Torque Range : 3-12 N.m with 3/4/5/6 mm & T25 tool bits	TPS-SP07
Quad Driver	4/6 mm flat head & #1/#2 Phillips	TPS-SP06
Shuttle Lever Set	1 pc long/2 pcs short	TPS-SP05
Torx® Wrench Set	T7/T9/T10/T15/T20/T25/T27/T30	TPS-SP05
T25 DuoTorx® Wrench		TPS-SP34
PocketShock DXG	(Optional)	TPSMB-DX



5th Tray (8 sets)

Tools	specifications	Art no.
Bottom Bracket Tool		TPS-SP17
Cartridge Bottom Bracket Tool		TPS-SP18
Cassette Lockring Wrench		TPS-SP22
Chain Whip/Sprocket Remover		TPS-SP21
Hydraulic Caliper Press	Fits all hydraulic disc brakes	TPS-SP23
Pedal Wrench 15mm	15 mm open end wrench	TPS-SP20
RotorTru	Truing disc rotor	TPS-SP24
Universal Crank Puller		TPS-SP19

OPTIONAL ACCESSORIES



WARRANTY

2-year Warranty: All mechanical components against manufacturer defects only.

Warranty Claim Requirements
To obtain warranty service, you must have your original sales receipt. Items returned without a sales receipt will assume that the warranty begins on the date of manufacture. All warranties will be void if the product is damaged due to user crash, abuse, system alteration, modification, or used in any way not intended as described in this manual.

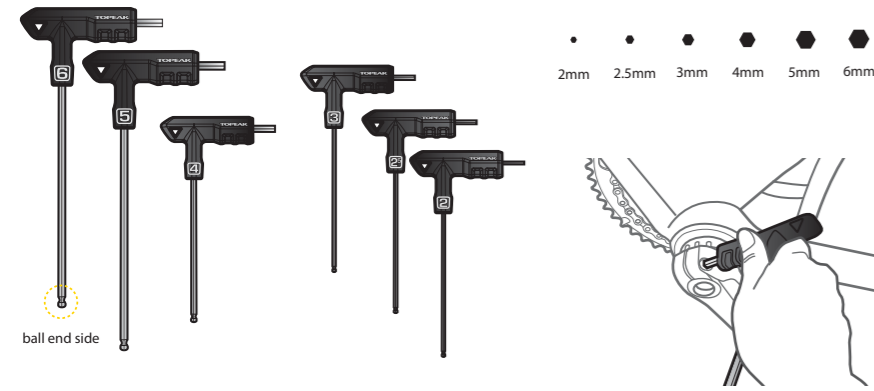
Please contact your Topeak dealer with any questions.
For USA customer service call : 1-800-250-3068
www.topeak.com

* Teflon® is a registered trademark of DuPont.
* Mavic® is a registered trademark of SALOMON S.A.
* Shimano® is a registered trademark of Shimano® Inc.
* Campagnolo® is a registered trademark of Campagnolo S.r.l.
* Torx® is a registered trademark of the Camcar Corp. division of Textron Inds.



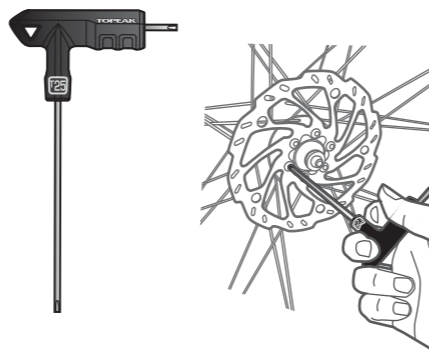
T-Handle DuoHex Wrench Set

Art no. TPS-SP01



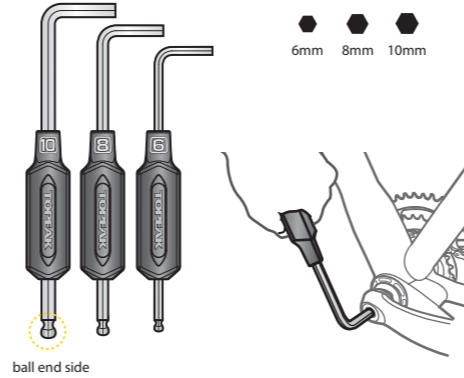
T25 DuoTorx® Wrench

Art no. TPS-SP34



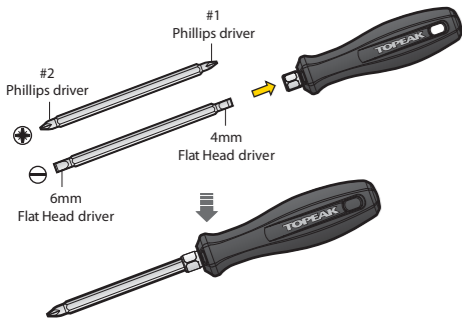
DuoHex Tool

Art no. TPS-SP02-04



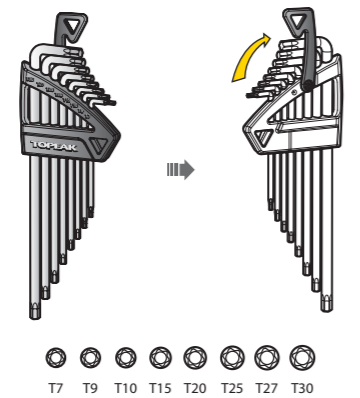
Quad Driver

Art no. TPS-SP06



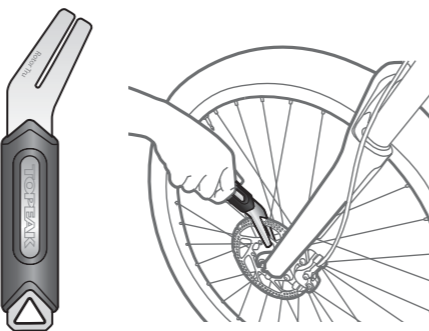
Torx® Wrench Set

Art no. TPS-SP05



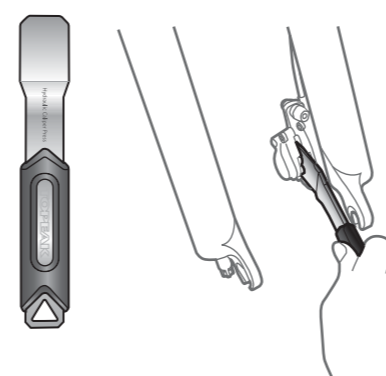
RotorTru

Art no. TPS-SP24



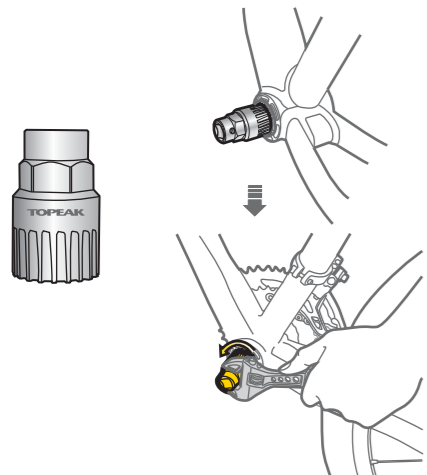
Hydraulic Caliper Press

Art no. TPS-SP23



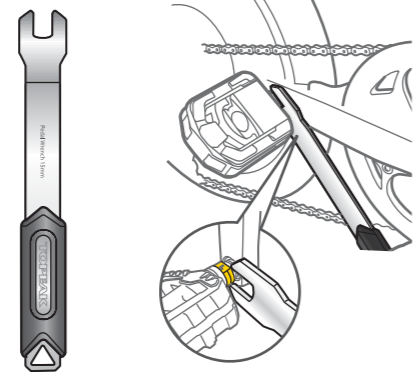
Cartridge Bottom Bracket Tool

Art no. TPS-SP18

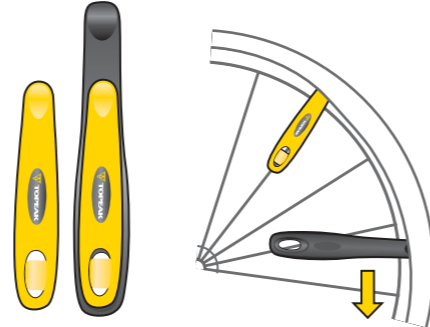


Pedal Wrench 15mm

Art no. TPS-SP20



Shuttle Lever Set



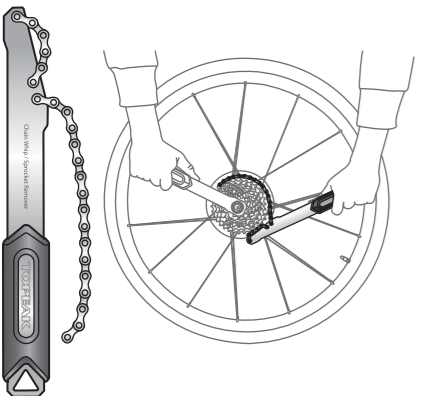
Adjustable Spanner

Art no. TPS-SP28



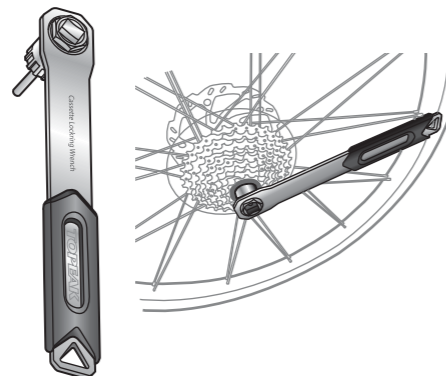
Chain Whip/Sprocket Remover

Art no. TPS-SP21



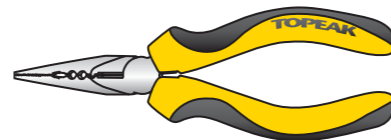
Cassette Locking Wrench

Art no. TPS-SP22



Needle Nose Pliers

Art no. TPS-SP29



Side Cutting Pliers

Art no. TPS-SP30



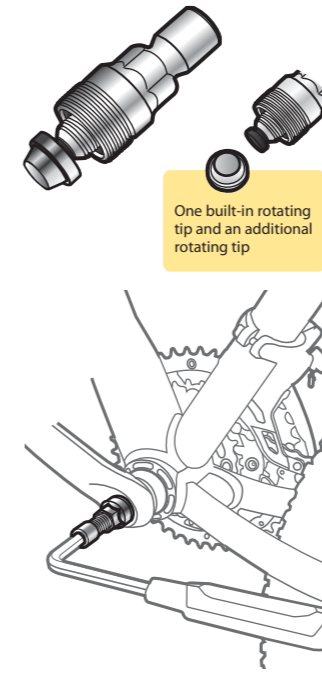
8/10mm Double Open End Spanner

Art no. TPS-SP27

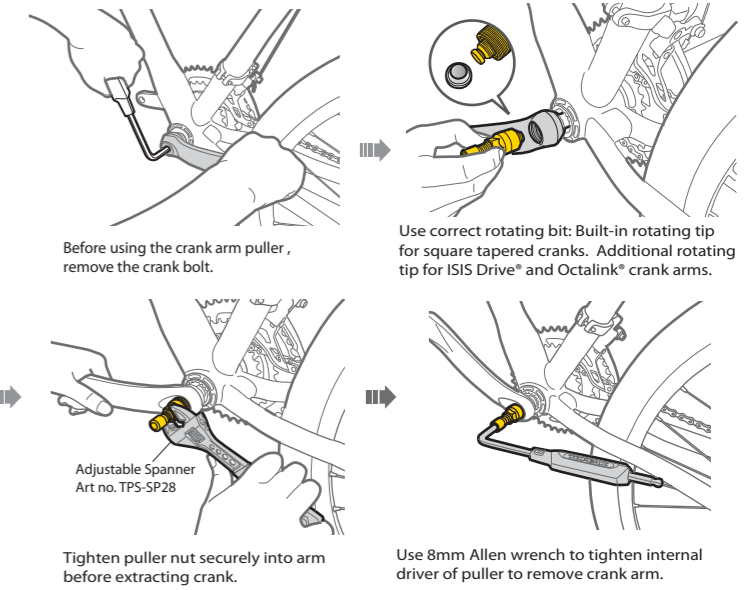


Universal Crank Puller

Art no. TPS-SP19

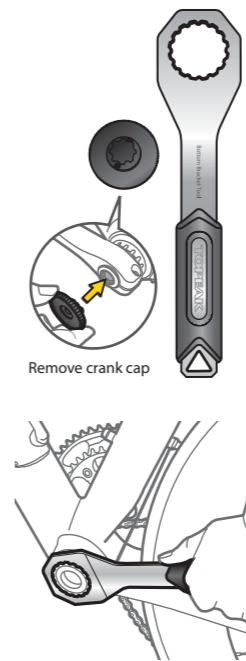


CRANK ARM REMOVAL

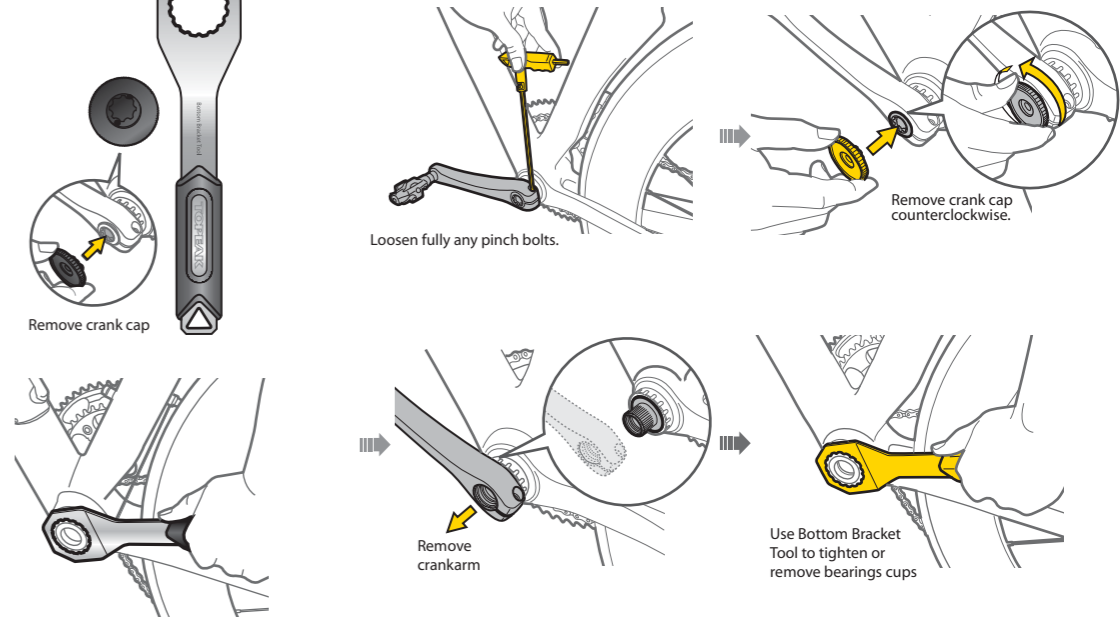


Bottom Bracket Tool

Art no. TPS-SP17

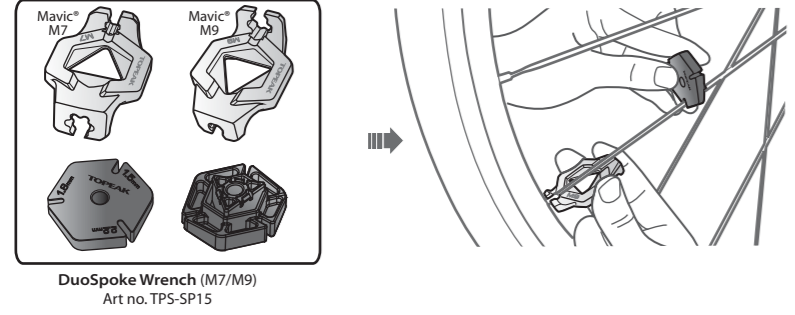
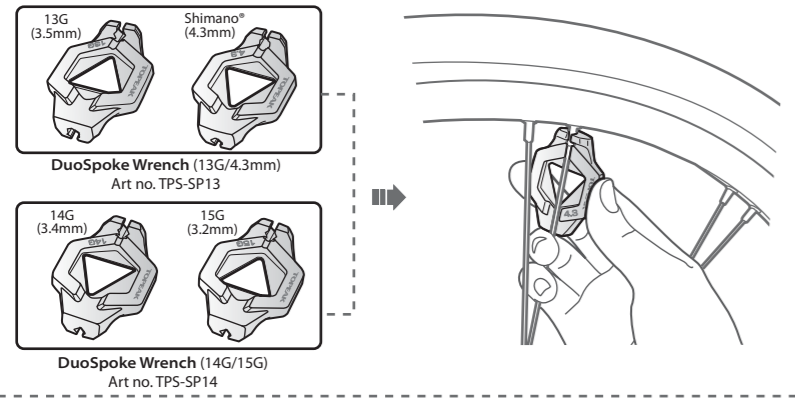


ADJUSTMENT/DISASSEMBLY OF EXTERNAL BEARING BOTTOM BRACKET

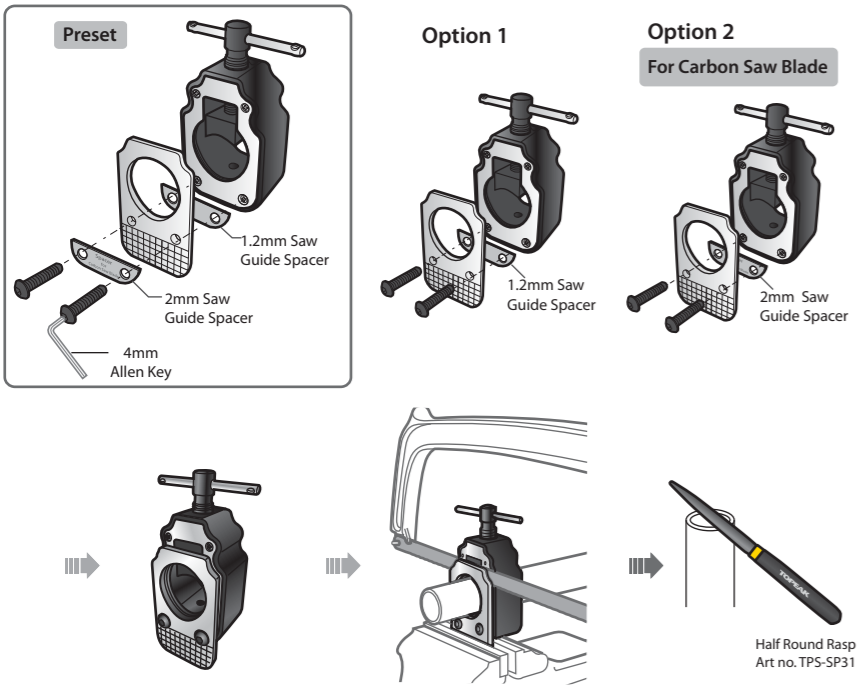




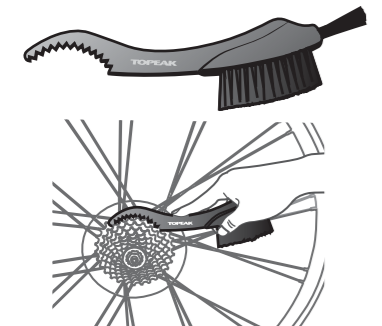
DuoSpoke Wrench Art no. TPS-SP13-15



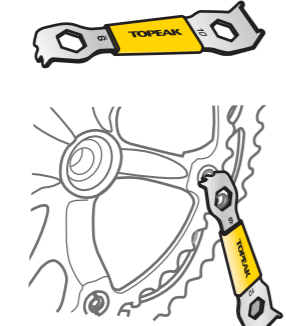
Threadless Saw Guide Art no. TPS-SP26



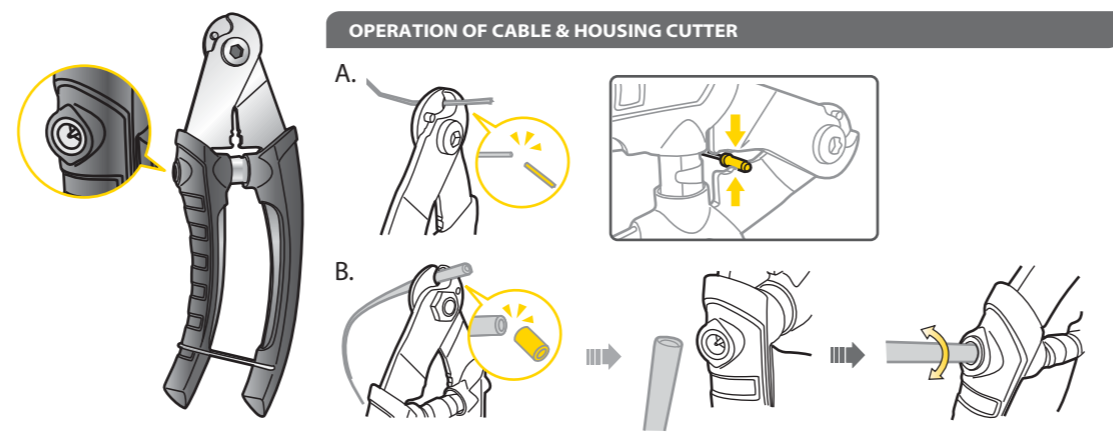
Sprocket Clean Brush Art no. TPS-SP33



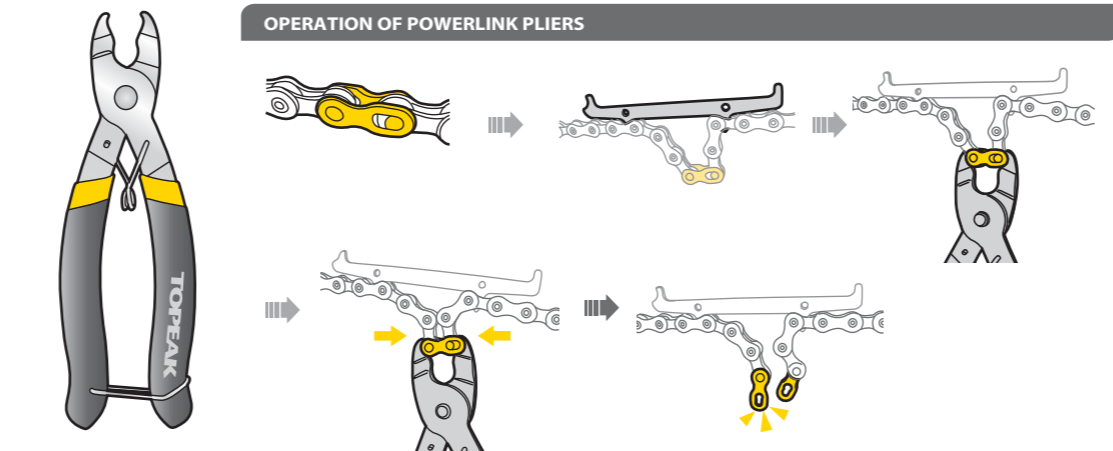
Chaining Nut Wrench Art no. TPS-SP11



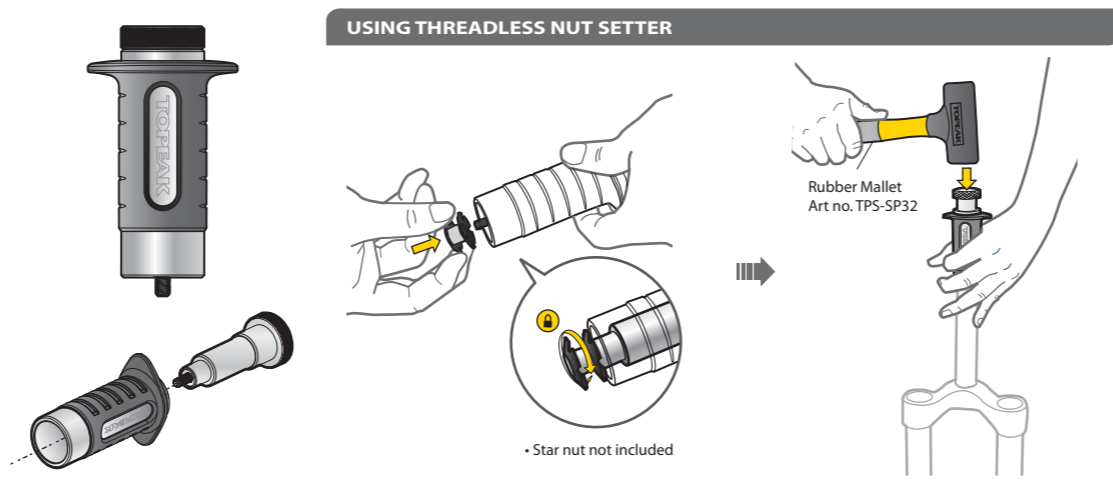
Cable & Housing Cutter Art no. TPS-SP16



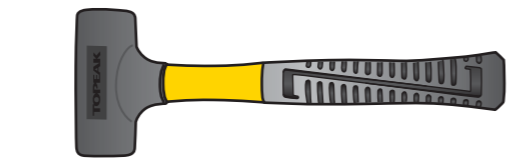
PowerLink Pliers Art no. TPS-SP12



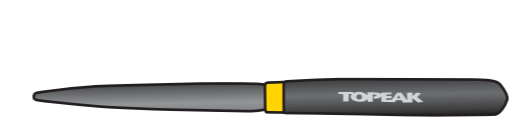
Threadless Nut Setter Art no. TPS-SP25



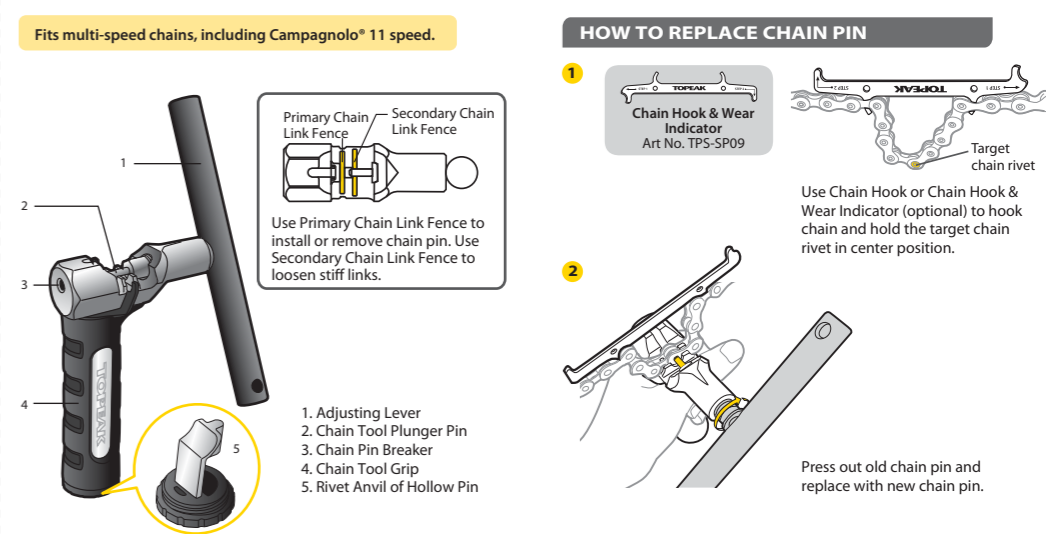
Rubber Mallet Art no. TPS-SP32



Half Round Rasp Art no. TPS-SP31



All Speeds Chain Tool Art no. TPS-SP08



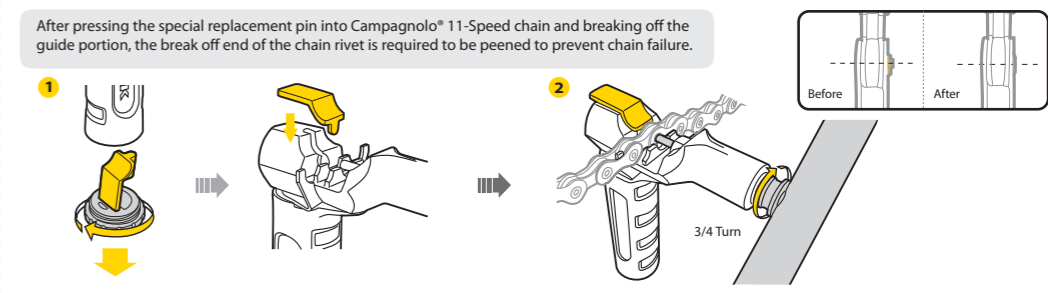
WARNING

- When pressing in the chain pin, push down on the top of the chain to keep it fully engaged in the chain tool cradle. Make sure the press pin of the chain tool is centered against the chain pin.
- Inspect chain rivet again and be sure chain links can bend freely after replacement.

MAINTENANCE

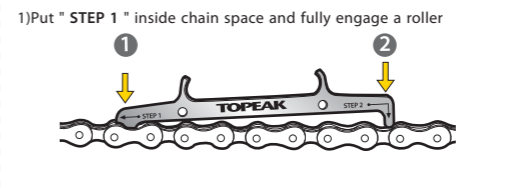
- Lubricate and maintain tool with Teflon® based lubricant when needed.
- To prevent rusting, keep tool dry.

INSTALLATION INSTRUCTION FOR CAMPAGNOLO® 11-SPEED HOLLOW CHAIN PIN

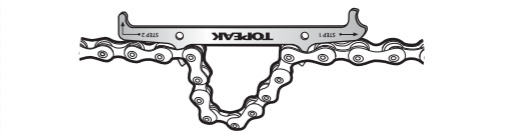


Chain Hook & Wear Indicator Art no. TPS-SP09

CHAIN WEAR INDICATOR



CHAIN HOOK



* Campagnolo® is a registered trademark of Campagnolo S.r.l.
* Teflon® is a registered trademark of DuPont.
* Mavic® is a registered trademark of SALOMON S.A.
* Shimano® is a registered trademark of Shimano® Inc.
* Torx® is a registered trademark of the Camcar Corp. division of Textron Inds.